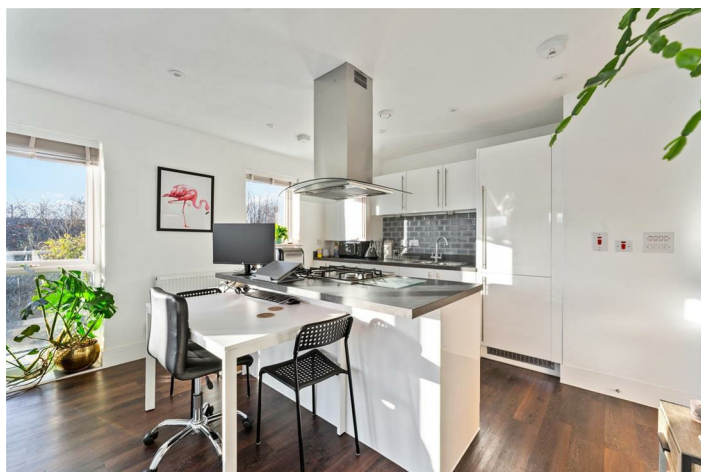


LEASEHOLD



Apartment (EPC Rating: B)

THE KILNS SURREY RH1 2FY

Asking Price

£335,000



SAXON
KINGS



2



2



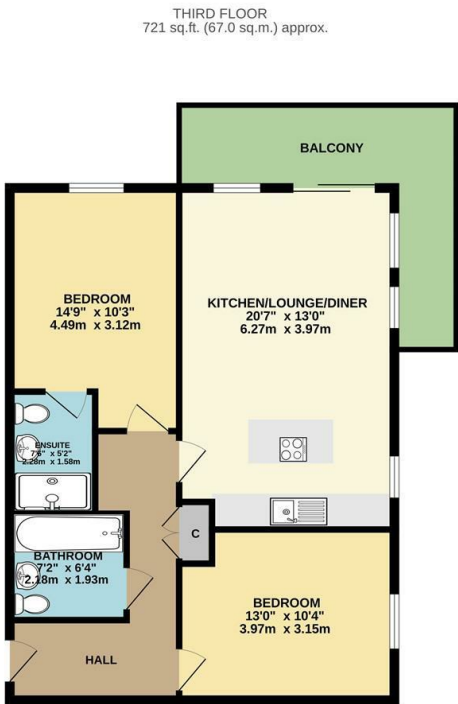
1



B

2 Bedroom Apartment located in Surrey

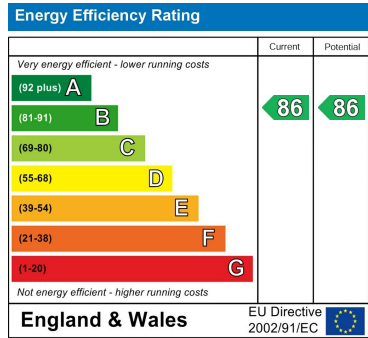
A beautifully presented two double bedroom, two bathroom apartment located in the popular Watercolour development. Built by Linden Homes in 2014 this modern apartment is both well designed and energy efficient with an impressive EPC rating B. Offering open plan living space and delightful views from the wrap around balcony and a modern kitchen boasting high gloss units and integrated appliances. Situated on the second floor benefits include a lift and two allocated parking spaces, one of which is under cover. Perfectly located close to the nature reserve and beautiful surrounding countryside offering peaceful accommodation but with Redhill town centre and station within walking distance and a Tesco express, doctors, pharmacy and vet all very close by within the development. Council tax band D. Leasehold 115 Years Remaining. Service Charge £1585. Ground rent £325.



TOTAL FLOOR AREA: 721 sq.ft. (67.0 sq.m.) approx.
Whilst every attempt has been made to ensure the accuracy of the floorplan contained herein, measurements of doors, windows, rooms and any other items are approximate and no responsibility is taken for any error, omission or mis-statement. This plan is for illustrative purposes only and should be used as such for any prospective purchase. The services, systems and appliances shown have not been tested and no guarantee as to their operation or efficiency can be given.
Made with Metreplan CS2023

Council Tax Band
B
Energy Performance Graph

Call us on
020 8546 7771
info@saxonkings.co.uk
www.saxonkings.co.uk



Agents Note: Whilst every care has been taken to prepare these particulars, they are for guidance purposes only. All measurements are approximate and are for general guidance purposes only and whilst every care has been taken to ensure their accuracy, they should not be relied upon and potential buyers are advised to recheck the measurements.